

## Circular Economy Solutions Dialogues (CESD) Deep Dive Webinar: Due Diligence and Circularity Solutions for Battery Value Chains

Thursday, 9 December 2021 | 12:30 - 14:30 CET



The CESD Deep Dive Webinar is part of the Circular Economy Solutions Dialogues (CESD) series, an initiative launched by the Deutsche Gesellschaft für Internationale Zusammenarbeit (GIZ) GmbH in cooperation with the Global Solutions Initiative (GSI).

Battery technology is becoming an essential component of sustainable mobility. Thus, battery demand and production volumes will significantly increase over the next decades. Most studies expect a growth of between 15 and 20 per cent until 2030. In order to achieve a sustainability transformation of the automotive sector, a broad set of sustainability actions must be taken along the battery value chain.

The CESD Deep Dive Webinar seeks to explore the current state of environmental and human rights due diligence in the battery value chain and the potential of sustainable supply chains and circular solutions.

The webinar will be hosted by GIZ and GSI and moderated by Daniel Weiss, Head of Green Economy Programme at adelphi.

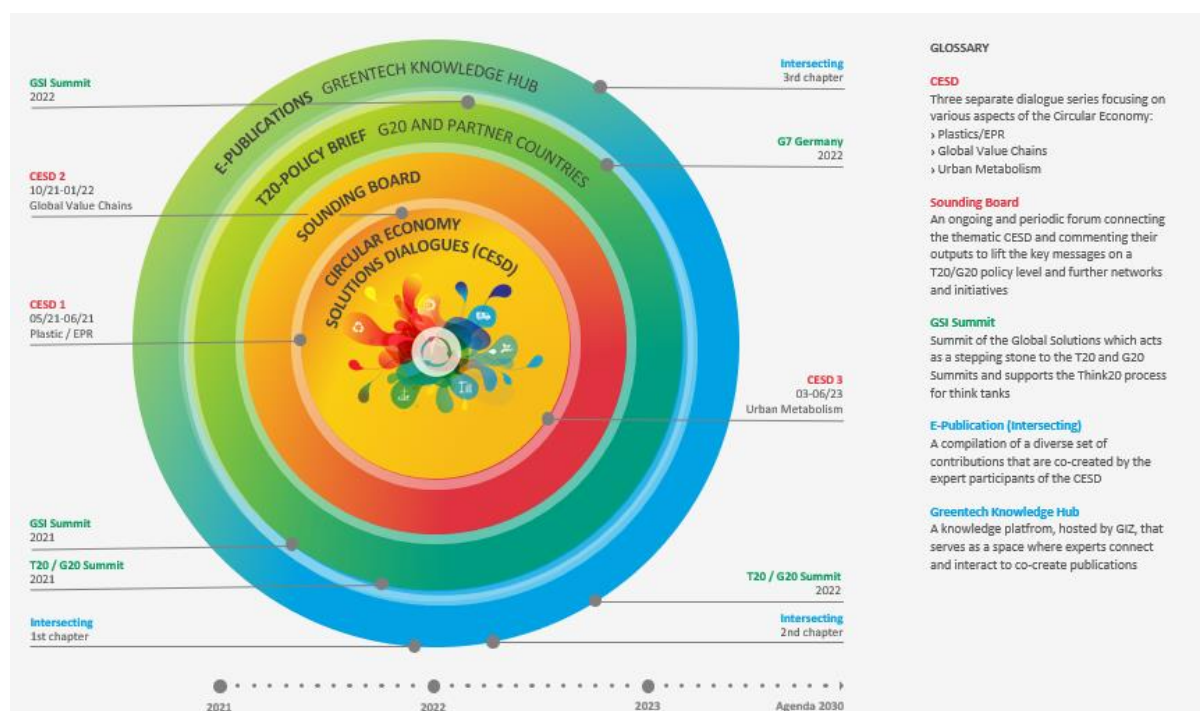
Registration and participation is open for everyone and encouraged for practitioners within the industry or related industries.

For questions please email Ms. Katharina Lange ([katharina.lange@giz.de](mailto:katharina.lange@giz.de)).

### AGENDA

Time (CET)	Description
12.30	Start of the session
12.30 – 12.40	Welcome to the CESD series and the Deep Dive <i>Konstantinos Karampourniotis, Living Prospects</i>
12.40 – 12.55	Sustainability challenges in the battery value chain – an introduction <i>Daniel Weiss, Head of Green Economy Programme, adelphi</i>
12.55 – 13.25	Environmental and human rights due diligence in the battery value chain – where do we stand? <i>Michael Reckordt, Raw materials expert, PowerShift e.V.</i>
13.25 – 14.00	Due Diligence and circularity solutions in the battery value chain – perspectives from the automotive sector (incl. Q&A) <i>Samara Madjid, Strategy Purchasing and Supplier Network BMW Group</i> <i>Jens Winker, Associate Director Supply Chain Consulting EMEA ELEVATE</i>
14.00 – 14.30	Plenary discussion
14.30	End of session

## Project activities to support a circular economy transition:



**adelphi** is a leading independent think tank and public policy consultancy on climate, environment and development. Their mission is to improve global governance through research, dialogue and consultation. Their services are aiming to help governments, international organisations, businesses and nonprofits design strategies for addressing global challenges.

The **Global Solutions Initiative (GSI)** provides an independent and long-term advisory structure to the T20/G20. It mobilizes insights of leading think tanks, policy makers, international organizations, business leaders and civil society to deliver policy recommendations for global governance fora. The annual Global Solutions Summit brings together thought leaders from across political, business and civic communities to further the respective G20 agenda.

The **Deutsche Gesellschaft für Internationale Zusammenarbeit (GIZ) GmbH** is a global service provider in the field of international cooperation for sustainable development. GIZ has over 50 years of experience in a variety of areas, including economic development and employment, energy and the environment, and peace and security. As a public-benefit federal enterprise, GIZ supports the German Government and clients in around 120 countries to develop solutions that offer people better prospects and sustainably improve their living conditions.